

### Installing Index Map:

1. Unzip westernus\_rel.zip into the folder \OziExplorer\Index Maps
2. These two files should now be in the folder: westernus\_rel.jpg and westernus\_rel.map
3. Start OziExplorer
4. From the Map menu select "Index Map"
5. Click on the "Load New Index Map" icon (see Figure 1)

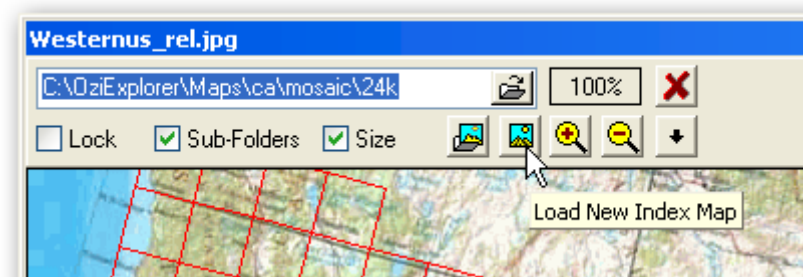


Figure 1: Top left corner of Index Map window.

6. In the dialog that opens select "westernus\_rel.map" and click OK

To select which maps are indicated on the index map set the search path (click on the folder icon just above the "Load New Index Map" icon; see Figure 1). All the maps in the search path will have their outline drawn on the index map.